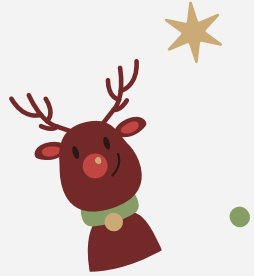


GBM 7

# Students 4 Public Health



Sign up  
for Raffle



*Welcome to our End of Semester Banquet!*

# Point System

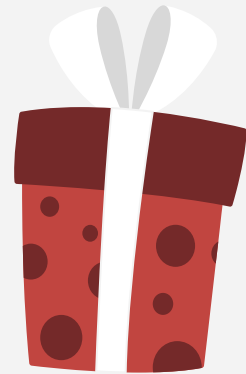


- **3 GBM:** Biweekly General Body Meetings on Wednesdays
- **1 Social:** Attending social events
- **2 Fundraising:** Attending or contributing to fundraising events
- **2 Community Service:** Attending community service activities
- **2 Educational** (SSF will count for this in the Spring semester): In the Fall, these are standard point opportunities offered throughout the semester

= Active Membership: 10 Points Total Required

TODAY is the last GBM of this semester!

- Points will reset each semester



# Point Submission Due Date

Points due **12/12/22 by 12 PM**  
(1.5 weeks from today)



# MERCH Update!

- **More merch distribution TODAY!**
  - Please stay behind to retrieve your merch order!
- **Remaining items:**
  - **3 small, 2 medium, 6 large**
  - **\$18**
  - [bit.ly/S4PHMerch](https://bit.ly/S4PHMerch)
  - Speak to an executive officer if you're interested in taking one of the last items home with you today :-)





# Sharia's Closet Community Service Opportunity

Sharia's Closet was founded in 2013 to provide zero-cost emergency clothing and hygiene products to people experiencing:  
difficult financial times due to domestic violence, homelessness, job loss, recent incarceration/imprisonment, and all the other situations that cause temporary or systemic poverty

- **How:** Bringing in donations/ contributions from their list
- **Where:** Legacy Suite
- **Last Day for Contributions:** Wednesday December 7th, 2-3pm
- **2 COMMUNITY SERVICE Point!**





# SHARIA'S CLOSET™

Emergency clothing with dignity and respect.  
6244 El Cajon Blvd Ste#5. San Diego, CA 92115



At Sharia's Closet we provide free, emergency clothing to individuals and families who are experiencing financial hardship or crisis.

### Our Ongoing Needs Include:

- New infant & toddler clothing
- Children & teen clothing
- Women's casual clothing & shoes
- Men's casual clothing and shoes
- Hygiene products (toothpaste, toothbrushes, soap, shampoo, conditioner, deodorant, lotion)
- Plus size women's clothing
- Big & tall men's clothing
- New underwear (all sizes)
- New socks (all sizes)
- Feminine hygiene products (pads, tampons)



Thank you for your support!

[www.ShariasCloset.org](http://www.ShariasCloset.org)

619-808-4979 info@shariascloset.org



shariascloset



**We need your help!**

**We are in need of MEN'S items:**

- Casual Clothing
- Casual Shoes
- Sneakers
- Jackets
- New Socks
- New Underwear
- Belts

**ALL SIZES!**

**Please share & donate if you can!**



50 likes

shariascloset Weekly Needs List

We often have shortages of men's clothing items. Please share this post with gentlemen in your network. Thank you for... more

View all 2 comments

6 days ago



# SLEEP-talkin Event



- Purpose: to teach the importance of a good night's sleep
  - Informative presentation from Exec
  - Take home sleep essentials
- Date: Wed. December 7th, 2-3pm  
Legacy Suite
- RSVP DUE TODAY!!!
- 2 community service points



# Lunchtime Lecture Series

- Join IBACH's Last Lunchtime lecture series
- Upcoming:
  - **December 2, 2022:** Miguel Angel Zavala-Perez, Associate Professor
    - 12:00 -1:00 PM
- **1 Educational point per lunchtime lecture**
- **Up to 2 points!**



## IBACH LUNCHTIME LECTURE SERIES

### Meet the New School of Public Health Faculty



Friday, November 4, 2022  
12-1:00pm PST

**Nicholas Lopez-Galvez, PhD, MPH, MA**  
Assistant Professor  
Environmental Health  
Title: The importance of evaluating multiple environmental pollutants among vulnerable populations

Check out our future upcoming IBACH Lunchtime Lectures!

Friday, December 2, 2022  
12-1:00pm PST  
**Miguel Angel Zavala-Perez**  
Associate Professor  
Environmental Health

Friday, March 10, 2023  
12-1:00pm PST  
**Benjamin Aceves, PhD, MPH, MA**  
Assistant Professor  
Health Promotion and Behavioral Science

Friday, February 10, 2023  
12-1:00pm PST  
**Corinne McDaniels-Davidson, PhD, MPH, CHES**  
Assistant Professor  
Health Promotion and Behavioral Science

In person at IBACH 9245 Sky Park Ct. Suite 2241 San Diego, 92123 or  
join via Zoom <https://SDSU.zoom.us/j/86329095787>

RSVP by clicking [HERE](#) or email [eallen@sdsu.edu](mailto:eallen@sdsu.edu)







# Talk It Out

- Join professionals from Counseling and Psychological to discuss any concerns you might have
- Information is **confidential**
- Every Monday from 1-3 on zoom
- <https://tinyurl.com/TIOF22>
- **1 Educational point**

DIVISION OF STUDENT AFFAIRS AND CAMPUS DIVERSITY

**NEW UPDATE**

# TALK *it* OUT

WITH THE CIR



Stressed Out?  
Feeling Unmotivated?  
Need Someone To Talk To?

Meet with **Shireen** for a 15-20-minute consultation. No appointment is needed! Simply Visit the CIR during the designated hours.

Mondays 1:00 - 3:00 pm PST  
Zoom Meeting Link  
<https://tinyurl.com/TIOF22>

**Shireen Trujillo, LCSW (she/her)**  
SDSU Counseling & Psychological Services

# SUMMER Internship Opportunities



- **Health Career Connection**

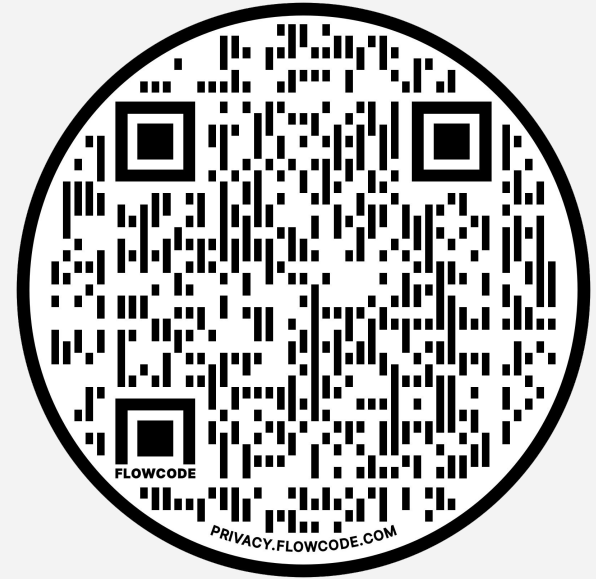
- <https://www.healthcareers.org/>
- Essay portion
- Deadline: December 5th

- **UCLA Public Health Scholars Training Program**

- <https://www.uclaphscholars.org/programdetails>
- Essays, 2 references required
- Deadline: January 31st
- *Part of program with other sites in Michigan, New York, etc. you can also apply to*

# A ticket to Success: NETWORKING in Washington DC

- Join S4PH on an **all expenses paid** trip dedicated to your public health interests! Airfare and accommodations will be fully covered and a stipend for food will be provided for EACH student.
- Will be meeting with health professionals from the CDC Washington Office, National Association of County and City Health Officials (NACCHO), the Association of Schools and Programs of Public Health (ASPPH), and the US Department of Defense at the Pentagon
- During Spring Break (March 27-31) but TBD on the actual dates
- **Deadline to apply is December 30th at 11:59PM**
- **Link to apply: <https://bit.ly/S4PHtoDC>**



**Scan me to join our  
Interest List!**

S'4PH

End of the Year

BANQUET

CONGRATULATIONS!

Join Our GroupMe! :)

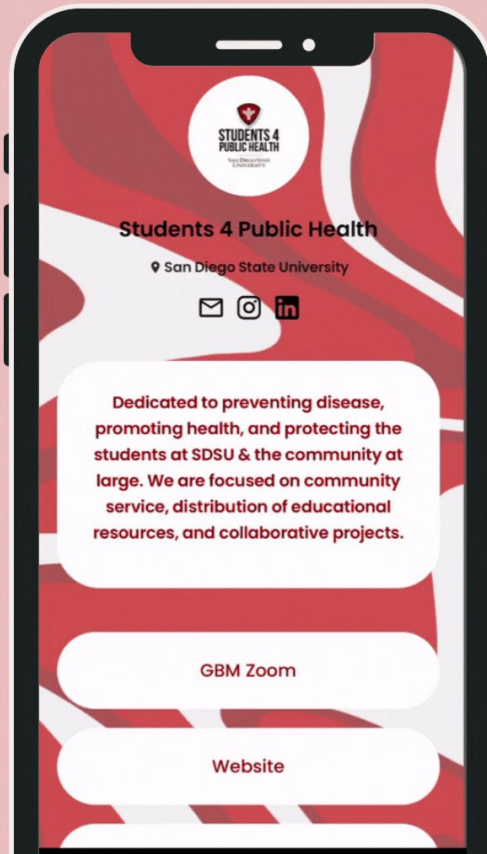


Stay connected with us!

We mainly communicate new updates through Instagram & GroupMe

IG: @students4publichealth

Access important links through our Beacons!



Add your email to get our biweekly newsletters!

# Point Submission Form

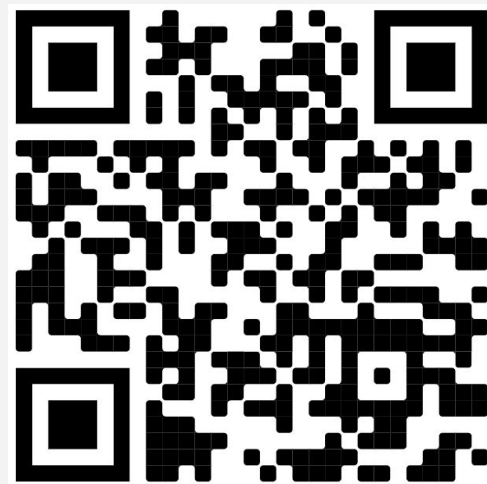


- Scan the QR Code here to fill out the Point Submission Form
- Use for any event outside of GBM within 48 hours





SIGN IN





Thanks!



*Do you have any questions?*

Hope you all have a GREAT WINTER BREAK!

MERRY Christmas!!